



## Distal Attachments Compatibility Chart

Straight, soft



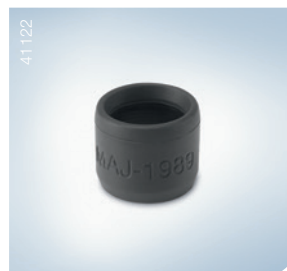
ESD, with hole  
single-use

Straight, soft



Zoom endoscopy, without hole  
single-use

Straight



Black distal hood  
reusable

Endoscope	Article Number	Article Name	Article Number	Article Name	Article Number	Article Name
CF-H290ECI	-	-	-	-	-	-
CF-H290L/I	N3529330	D-201-13404	-	-	N3830630	MAJ-1990
CF-HQ290L/I	N3529430	D-201-14304	-	-	N3830730	MAJ-1991
CF-HQ290ZL/I	N3529430	D-201-14304	-	-	N3830730	MAJ-1991
CF-FH260AZL/I	-	-	E0426964	D-201-16403	N3830830	MAJ-1992
CF-Q260AL/I	N3529330	D-201-13404	-	-	-	-
CF-H190L/I	N3529430	D-201-14304	-	-	N3830730	MAJ-1991
CF-HQ190L/I	N3529430	D-201-14304	-	-	N3830730	MAJ-1991
CF-H185L/I	N3529430	D-201-14304	-	-	N3830730	MAJ-1991
CF-H180AL/I	N3529530	D-201-15004	-	-	N3830430	MAJ-1988
CF-H180DL/I	N3529530	D-201-15004	-	-	N3830430	MAJ-1988
CF-Q180AL/I	N3529430	D-201-14304	-	-	N3830430	MAJ-1988
Pediatric colonoscopes						
PCF-H290L/I	N3529230	D-201-12704	-	-	N3830630	MAJ-1990
PCF-H290DL/I	N3529230	D-201-12704	-	-	N3830630	MAJ-1990
PCF-H290ZL/I	N3529230	D-201-12704	-	-	N3830630	MAJ-1990
PCF-Q260AL/I	N3529230	D-201-12704	-	-	-	-
PCF-H190DL/I	N3529230	D-201-12704	-	-	N3830630	MAJ-1990
PCF-H190L/I	N3529230	D-201-12704	-	-	N3830630	MAJ-1990
PCF-H190TL/I	N3529030	D-201-11304	-	-	N3830530	MAJ-1989
PCF-HQ190L/I	N3529330	D-201-13404	-	-	N3830730	MAJ-1991
PCF-PH190L/I	N3529030	D-201-11304	-	-	N3830530	MAJ-1989
PCF-H180AL/I	N3529230	D-201-12704	-	-	N3830630	MAJ-1990
PCF-Q180AL/I	N3529230	D-201-12704	-	-	N3830630	MAJ-1990
Enteroscopes						
SIF-H290S	N3528930	D-201-10704	-	-	N3830430	MAJ-1988
SIF-Q180	N3528930	D-201-10704	-	-	N3830430	MAJ-1988